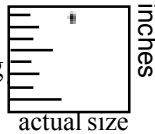


Thrips



Western Flower Thrips

- Approximately 1/25 inch long
- Tubular shaped
- Adults with feathery wings
- Front end of the head is square with a pair of red eyes at the corners, and a pair of antennae in the middle



Grape Thrips

- Appearance similar to western flower thrips





Early Season Shoot Damage

- Early spring damage when shoots are less than 12 inches long
- Shorter internodes
- Stunted growth



Mid-season damage:

- Mis-shapen basal leaves 

- Scarred canes with shorter internodes 

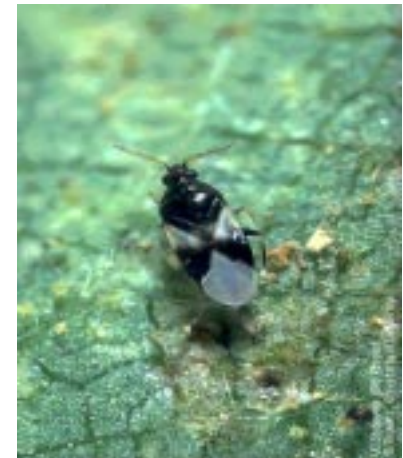


Left: Normal shoot. **Right:** Early spring thrips damage



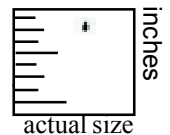
Predators: Minute pirate bug nymph

- Nymphs are cream-colored and oval shaped
- Long piercing mouth parts
- As name implies, they are very small, a bit larger than the thrips



Predators: Minute pirate bug adult

- Adults have black and white pattern on wings



Thrips

Date	Insect Stage	What to look for
Budbreak through April	Adults and immatures	<ul style="list-style-type: none">• Stunted shoot growth immediately after budbreak• At budbreak watch for scarring at the tips of the tiny, immature leaves. Peel back these leaves and with a hand lens look for thrips.• If shoot growth is delayed due to cold weather, thrips damage may be more apparent.• When shoots are short, inspect for thrips on the developing leaves at the tip of the shoot.• When shoots can be bent without damage, sharply tap the tip of the shoot onto a hard white surface. Look for fast moving elongated insects.