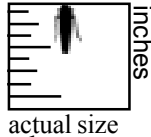


Sharpshooters



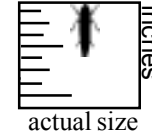
Blue-green sharpshooter

- 1/4 inch long
- Dark green to bluish green
- Black markings on back of head and thorax
- Yellow triangle between the wings
- One generation per year
- Feeds and breeds on woody plants



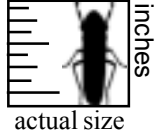
Red-headed sharpshooter

- 1/5 inch long
- Green wings and thorax
- Sharply pointed head with reddish color
- Four generations per year
- Breeds and feeds on bermuda grass



Glassy-winged sharpshooter and egg mass

- 1/2 inch long
- Dark brown with light underside
- Upper part of head stippled with yellow spots
- Wings partly transparent with reddish veins, folded flat over the body
- Breeds and feeds on woody and herbaceous plants



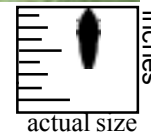
Blue-green sharpshooter nymph

- Five immature nymphal stages
- White in color



Green sharpshooter

- 5/16 inch long
- Green on the top side
- Tan to dark brown legs and underside
- Three generations per year
- Breeds and feeds on grasses



Glassy-winged sharpshooter nymph

- Five immature nymphal stages
- Olive-gray in color with prominent reddish eyes

Sharpshooters

Blue-Green Sharpshooter

Date	Insect Stage	What to look for
March through May	<ul style="list-style-type: none"> Blue-green sharpshooter adult 	<ul style="list-style-type: none"> Before budbreak, place yellow sticky cards at least 4 by 7 inches in size at the edge of the vineyard adjacent to a riparian zone, wooded areas or landscape. Place traps 100 to 200 feet apart Check traps at least once a week Remove insects from the trap after counting them Replace traps whenever they become dirty or are no longer sticky
Mid-April Through July	<ul style="list-style-type: none"> Blue-green sharpshooter nymphs 	<ul style="list-style-type: none"> Look for BGSS nymphs in their preferred host plants at the edge of the vineyard Sample host plants with the use of a sweep net Empty the contents of the sweep net in a plastic bag for viewing

Glassy-Winged Sharpshooter

Date	Insect Stage	What to look for
March through November	Glassy-winged sharpshooter adult	<ul style="list-style-type: none"> Before budbreak, place yellow sticky cards (preferably 5.5 by 9 inches in size) at the edge of the vineyard adjacent to a riparian zone, wooded areas or landscape Place as many traps as you can check on a weekly basis Check traps at least once a week and keep a record Replace traps whenever they become dirty or are no longer sticky

Green and Red-headed Sharpshooters*

Date	Insect Stage	What to look for
April through May	<ul style="list-style-type: none"> Green sharpshooter adult 	<ul style="list-style-type: none"> Sample lush grasses with a sweep net
	<ul style="list-style-type: none"> Red-headed sharpshooter adult 	<ul style="list-style-type: none"> Sample bermudagrass with a sweep net

* Green and red-headed sharpshooters are found where grasses remain lush year round. In the north coast vineyards, adjacent to their breeding habitat, these sharpshooters can be a source of Pierce's disease.